

## Recombinant allergen Ole e 1 for *Olea europaea* (olive tree)

**CATALOG NUMBER:** RAL0012

**LOT NUMBER:** #

**RECOMBINANT ALLERGEN:** *Olea europaea ole e 1* olive tree allergen (Asturias *et al.*, 1997).

**DESCRIPTION:** Ole e 1 is the most prevalent allergen of olive tree pollen. This allergen has been prepared as a recombinant mature protein fused to a his-tag in its C-terminus.

**PRESENTATION:** liquid protein solution

**SOURCE:** *Pichia pastoris*

**MOLECULAR WEIGHT:** determined by SDS-PAGE, the protein smear is located between molecular markers of 35,000 and 25,000 Da, while relative molecular mass calculated from amino acid sequence, without glycosylation, is approx. 18,887.36 Da.

**BATCH COMPOSITION:**

COMPONENTS	COMPOSITION
his-ole e 1	recombinant allergen with a his-tag
Storage buffer	20 mM phosphate buffer pH 8 and 0.15 M NaCl

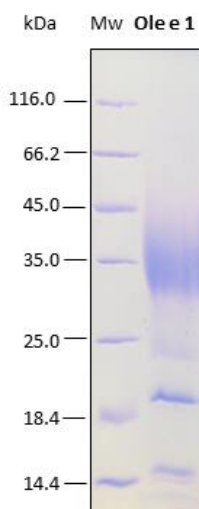
### QUALITY CONTROL:

#### 1. PROTEIN CONCENTRATION DETERMINED ESPECTROPHOTOMETRICALLY

DO<sub>280</sub> = 0.942  
A<sub>0.1%</sub> (=1 g/l) = 0.784  
CONCENTRATION\*: 1.20 mg/ml

\* The measurement of the protein concentration has been performed with the theoretical extinction coefficient of the recombinant protein obtained from Gill and von Hippel, 1989

#### 2. PURITY CONTROL IN SDS-PAGE: 15%

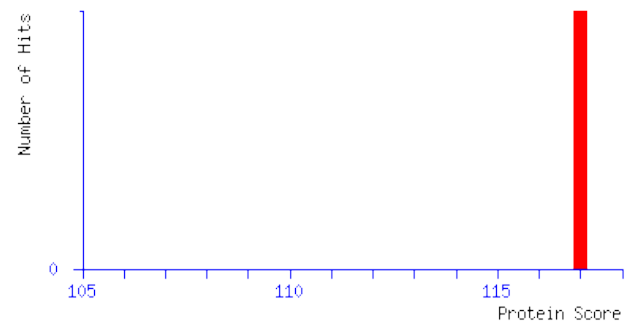


**Figure 1.** SDS-PAGE analysis (15%) of 5 µl of the recombinant allergen ole e 1. Purity is >95% as determined by gel electrophoresis. The smear appearance of the protein is probably due to the glycosylation pattern.

### 3. PROTEIN FINGERPRINT BY MASS SPECTROMETRY

Top Score: 117 for ole e 1

Protein score is  $-10 \cdot \log(P)$ , where P is the probability that the observed match is a random event. Protein scores greater than 13 are significant ( $p < 0.05$ ).



P19963\_2 Mass: 19217 Score: 117 Expect: 8e-012 Matches: 13  
LOCUS ALL1\_OLEEU

The MS was performed with a by MALDI TOF/TOF model UltrafleXtreme (Bruker).

### 4. ANALYSIS BY AN ELISA ASSAY

This biomarker has been evaluated in an external study carried out at a Spanish hospital by a group of allergists with positive and negative serum samples from patients. The evaluation of the recombinant allergens has been performed by means of an in-house ELISA assay. In this immunoassay, it has been determined the presence of specific IgE in sera that had previously been validated by skin prick testing (SPT) and the UniCAP® test. The sera panel for this study was composed of 25 positive and 10 negative specimen sera.

The recombinant allergen ole e 1 detected 25 positive sera out of 25 (100% incidence) with higher prevalence of sera with titers of 3.5-17.50 IU/ml (international units per milliliter; 1 IU is equivalent to 2.42 ng of IgE).

### 5. ABSENCE OF PRECIPITATION AFTER A FREEZING AND THAWING CYCLE: ok

### LOT SPECIFICATIONS:

**1. CONCENTRATION:** 1.20 mg/ml

**2. TOTAL QUANTITY PER ALIQUOT:** 1 mg

**3. TOTAL VOLUME PER ALIQUOT:** 0.874 ml

**4. STORAGE:** Protein is shipped with dry ice. Upon arrival, it should be aliquoted in order to avoid repeated freezing and thawing cycles and stored at -20°C to -80°C.

**5. OBSERVATIONS:** proteins should be maintained frozen at high concentrations. In order to defrost the protein, maintain the aliquot at 25°C without shaking to avoid aggregation. Prior making test dilutions and after defrosting

the protein, is recommended to remove possible protein aggregates by centrifuging the stock solution, avoiding alterations in the immobilization of the biomolecule to the solid surface.

**RELATED PRODUCTS:**

Ole e 2, Ole e 5.

**BIBLIOGRAPHY:**

**Asturias, JA et al.** Cloning and expression of the panallergen profiling and the major allergen (Ole e 1) from olive tree pollen. 1997, J. Allergy Clin Immunol 100:365-72.

**Gill SC, von Hippel PH.** Calculation of protein extinction coefficients from amino acid sequence data. *Anal Biochem.* 1989 Nov 1;182(2):319-26.

**Important Notes:** During shipment, small volumes of product will occasionally become entrapped in the seal of the product vial. For products with volumes of 200 µl or less, we recommend gently tapping the vial on a hard surface or briefly centrifuging the vial in a tabletop centrifuge to dislodge any liquid in the containers cap.

Although recombinant antigens are expressed in non-pathogenic *P. pastori* and bacterial integrity is destroyed during purification, the antigen preparation should be handled as potentially infectious.

**NOT FOR DIAGNOSTIC USE, FOR RESEARCH USE ONLY**