



Recombinant allergen Fel d 1 for *Felis domesticus* (cat)

CATALOG NUMBER: RAL0023

LOT NUMBER: #

RECOMBINANT ALLERGEN: Fel d 1 is the major allergen of *Felis domesticus* (cat) (Ohman *et al.*, 1976).

DESCRIPTION: the *Felis domesticus* uteroglobin Fel d 1 has been prepared as the recombinant mature protein composed of two chains and fused to a his-tag.

PRESENTATION: liquid protein solution

SOURCE: *Pichia pastoris*

MOLECULAR WEIGHT: determined by SDS-PAGE, the protein shows a smear between molecular markers of 18,400 Da and 14,400 Da which corresponds with the monomer. The smear appearance might be due to the glycosylation pattern.

BATCH COMPOSITION:

COMPONENTS	COMPOSITION
his-Fel d 1	recombinant allergen with a his-tag
Storage buffer	20 mM HEPES buffer pH 8, 0.15 M NaCl and 5 mM EDTA

QUALITY CONTROL:

1. PROTEIN CONCENTRATION DETERMINED ESPECTROPHOTOMETRICALLY

DO₂₈₀ = 0.877
A_{0.1%} (=1 g/l) = 0.593
CONCENTRATION*: 1.48 mg/ml

* The measurement of the protein concentration has been performed with the theoretical extinction coefficient of the recombinant protein obtained from Gill and vonHippel, 1989. It is recommended that the users carry out their absorbance determinations to avoid equipment variabilities regarding final concentration, mainly in reproducibility analysis.

2. PURITY CONTROL IN SDS-PAGE: 15%

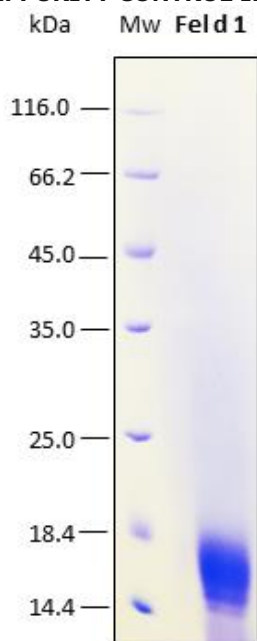


Figure 1. SDS-PAGE analysis (15%) of 10 µl of recombinant allergen. Purity is >95% as determined by gel electrophoresis.

3. ANALYSIS BY AN ELISA ASSAY

The evaluation of the recombinant allergen has been evaluated in an external study carried out at a Spanish hospital by a group of allergists with positive and negative serum samples from patients. The evaluation of the recombinant allergens has been performed by means of an in-house ELISA assay. In this immunoassay, it has been determined the presence of specific IgE in sera that had previously been validated by skin prick testing (SPT) and the UniCAP® test. The sera panel for this study was composed of 25 positive and 10 negative specimen sera.

The recombinant allergen Fel d 1 detected 22 positive sera out of 25 (82% incidence) with higher prevalence of sera with titers of 0.70-3.5 IU/ml (international units per milliliter; 1 IU is equivalent to 2.42 ng of IgE).

4. ABSENCE OF PRECIPITATION AFTER A FREEZING AND THAWING CYCLE: ok

LOT SPECIFICATIONS:

- 1. CONCENTRATION:** 1.48 mg/ml
- 2. TOTAL QUANTITY PER ALIQUOT:** 1 mg
- 3. TOTAL VOLUME PER ALIQUOT:** 0.709 ml

4. STORAGE: Protein is shipped with dry ice. Upon arrival, it should be aliquoted to avoid repeated freezing and thawing cycles and stored at -20°C to -80°C. In order to defrost the protein, maintain the aliquot at 25°C without shaking to avoid aggregation.

5. TESTED APPLICATIONS: ELISA.

6. POSSIBLE APPLICATIONS: WB, DB, Indirect ELISA, positive control in direct ELISA, CLIA, lateral-flow. Where this product has not been tested for use in a particular technique, this does not necessarily exclude its use in such procedures. Suggested working dilutions are given as a guide only. It is recommended that the user titrates. **We strongly recommend utilising anti-CCD (cross-reactive-carbohydrate determinants) absorbent to eliminate the anti-CCD IgE antibodies present in normal human sera to prevent cross-reaction of this glycoprotein. By using this absorbent, reactions resulting from CCDs are eliminated.**

7. OBSERVATIONS: proteins should be maintained frozen at high concentrations. In order to defrost the protein, maintain the aliquot at 25°C without shaking to avoid aggregation. Prior making test dilutions and after defrosting the protein, is recommended to remove possible protein aggregates by centrifuging the stock solution, avoiding alterations in the immobilization of the biomolecule to the solid surface.

RELATED PRODUCTS:

None.



BIBLIOGRAPHY:

Ohman, J. L., Lowell, F. C., Bloch, K. J. and Kendall, S. Allergens of mammalian origin V. properties of extracts derived from domestic cat. 1976, *Clin. Allergy* 6:419-28.

Gill SC, von Hippel PH. Calculation of protein extinction coefficients from amino acid sequence data. *Anal Biochem.* 1989 Nov 1;182(2):319-26.

Important Notes: During shipment, small volumes of product will occasionally become entrapped in the seal of the product vial. For products with volumes of 200 µl or less, we recommend gently tapping the vial on a hard surface or briefly centrifuging the vial in a tabletop centrifuge to dislodge any liquid in the containers cap.

Although recombinant antigens are expressed in non-pathogenic *P. pastori* and bacterial integrity is destroyed during purification, the antigen preparation should be handled as potentially infectious.

FOR RESEARCH AND COMMERCIAL USE *IN VITRO*: not for human *in vivo* or therapeutic use.