

Recombinant antigen p30 (SAG1) for *Toxoplasma gondii*

CATALOG NUMBER: RAG0030

LOT NUMBER: #

RECOMBINANT ANTIGEN: *T. gondii* antigen p30 (Santoro et al., 1986).

DESCRIPTION: the mature antigen p30 of the *T. gondii* (SAG1) has been prepared as a recombinant antigen fused to a his-tag in its C-terminal.

PRESENTATION: liquid protein solution

SOURCE: *Pichia pastoris*

MOLECULAR WEIGHT: determined by SDS-PAGE, the protein appears like a dimer, with one band like a smear between molecular markers of 35,000-25,400 Da, and another around marker of 66,200 Da. The relative molecular mass calculated from amino acid sequence and without glycosylation is 30,361.23 Da.

BATCH COMPOSITION:

COMPONENTS	COMPOSITION
his-p30	recombinant antigen with a his-tag in its C-terminus
Storage buffer	20 mM phosphate buffer pH 7, 0.15 M KCl and 0.1% polyoxyethylene (10) tridecyl ether

QUALITY CONTROL:

1. PROTEIN CONCENTRATION DETERMINED ESPECTROPHOTOMETRICALLY

DO₂₈₀ = 1.00
 A_{0.1%} (=1 g/l) = 0.715
 CONCENTRATION*: 1.40 mg/ml

* The measurement of the protein concentration has been performed with the theoretical extinction coefficient of the recombinant protein obtained from Gill and vonHippel, 1989. It is recommended that the users carry out their absorbance determinations to avoid equipment variabilities regarding final concentration, mainly in reproducibility analysis.

2. PURITY CONTROL IN SDS-PAGE: 15%

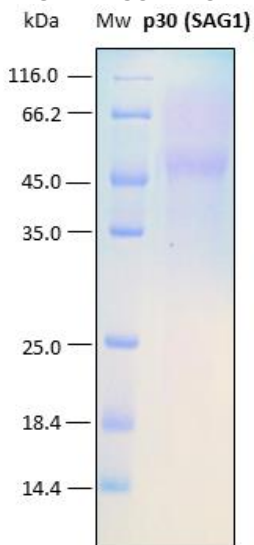


Figure 1. SDS-PAGE analysis (15%) of 5 µl of recombinant p30. Purity is > 95% as determined by gel electrophoresis. The upper band at the marker of 66.2 kDa corresponds to the dimer p30 and the band above 45 kDa corresponds to the monomer p30.

3. POSITIVE AND NEGATIVE SERA DISCRIMINATION BY AN ELISA ASSAY

The titer has been suggested in reference to an indirect ELISA assay performed at Rekom Biotech over the lot obtained.

Each end user should carry out his own titration for his particular application.

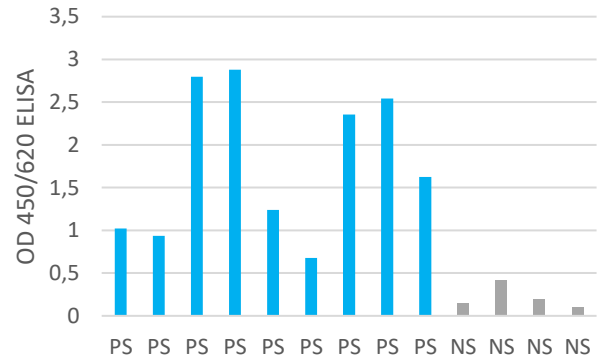


Figure 2. This plot shows an indirect IgG ELISA assay performed with the SAG1 recombinant antigen. The optical density at 450/620 nm for positive sera (pale blue) and negative sera (gray) are displayed in the graphic. **For specimen discrimination sera, the coating was performed with 1 µg/ml of protein in microtiter plates, 25 µg of anti-CCD sorbent (Ref. Rekom SOR0001) was added to the sera 10 min before incubation with the coated antigen.**

4. ABSENCE OF PRECIPITATION AFTER A FREEZING AND THAWING CYCLE: ok

LOT SPECIFICATIONS:

- 1. CONCENTRATION:** 1.40 mg/ml
- 2. TOTAL QUANTITY PER ALIQUOT:** 1 mg
- 3. TOTAL VOLUME PER ALIQUOT:** 0.75 ml
- 4. SUGGESTED TITER BY ELISA:** up to 1:1,400, which corresponds to 1 µg/ml of protein concentration in plates for IgG detection.
- 5. STORAGE:** Protein is shipped with dry ice. Upon arrival, it should be aliquoted in order to avoid repeated freezing and thawing cycles and stored at -20°C to -80°C. In order to defrost the protein, maintain the aliquot at 25°C without shaking to avoid aggregation.
- 6. TESTED APPLICATIONS:** ELISA.
- 7. POSSIBLE APPLICATIONS:** WB, DB, Indirect ELISA, positive control in direct ELISA, CLIA, lateral-flow. Where this product has not been tested for use in a particular technique, this does not necessarily exclude its use in such procedures. Suggested working dilutions are given as a guide only. It is recommended that the user titrates.
- 8. OBSERVATIONS:** proteins should be maintained frozen at high concentrations. The dilution to be performed for ELISA assays should be made with a small quantity of protein, the same day of the experiment. In order to defrost the protein, maintain the aliquot at 25°C without shaking to

avoid aggregation. Prior making test dilutions and after defrosting the protein, is recommended to remove possible protein aggregates by centrifuging the stock solution, avoiding alterations in the immobilization of the biomolecule to the solid surface.

RELATED PRODUCTS:

p29 (GRA7), p35 (GRA8), ChimToxo1, ChimToxo2, ChimToxo2Biot.

BIBLIOGRAPHY:

Santoro, F., Charif, H. and Capron, A. The immunodominant epitope of the major membrane tachyzoite protein (p30) of *Toxoplasma gondii*. 1986, *Parasite Immunol.* 8:631-9.

Gill SC, von Hippel PH. Calculation of protein extinction coefficients from amino acid sequence data. *Anal Biochem.* 1989 Nov 1;182(2):319-26.

CEO Signature:
Date: 11/11/2020



Important Notes: During shipment, small volumes of product will occasionally become entrapped in the seal of the product vial. For products with volumes of 200 µl or less, we recommend gently tapping the vial on a hard surface or briefly centrifuging the vial in a tabletop centrifuge to dislodge any liquid in the containers cap.

Although recombinant antigens are expressed in non-pathogenic *P. pastoris* and bacterial integrity is destroyed during purification, the antigen preparation should be handled as potentially infectious.

FOR RESEARCH AND COMMERCIAL USE *IN VITRO*: not for human *in vivo* or therapeutic use.