

Recombinant antigen P1 adhesin for *Mycoplasma pneumoniae*

CATALOG NUMBER: RAG0053

LOT NUMBER: #

RECOMBINANT ANTIGEN: *Mycoplasma pneumoniae* P1 adhesin protein (Chaudhry *et al.*, 2005).

DESCRIPTION: this recombinant protein contains the C-terminus of the P1 adhesin protein (aa 832-1521) which is one of the major surface adhesins of this bacteria and induces a strong humoral response during *M. pneumoniae* infection. It has been expressed as a recombinant antigen fused to a his-tag in its N-terminus.

PRESENTATION: liquid protein solution

SOURCE: *Escherichia coli*

MOLECULAR WEIGHT: determined by SDS-PAGE, the protein bands are two and between molecular markers of 34,000-26,000 Da, while relative molecular mass calculated from amino acid sequence is 77,380.02 Da.

BATCH COMPOSITION:

COMPONENTS	COMPOSITION
his-P1 adhesin	recombinant antigen with a his-tag in its N-terminus
Storage buffer	20 mM phosphate buffer pH 6, 0.15 M NaCl, 0.1% polyoxyethylene (10) tridecyl ether and 2 M urea

QUALITY CONTROL:

1. PROTEIN CONCENTRATION DETERMINED ESPECTROPHOTOMETRICALLY

DO₂₈₀ = 1.33
 A_{0.1%} (=1 g/l) = 1.117
 CONCENTRATION*: 1.19 mg/ml

* The measurement of the protein concentration has been performed with the theoretical extinction coefficient of the recombinant protein obtained from Gill and vonHippel, 1989

2. PURITY CONTROL IN SDS-PAGE: 15%

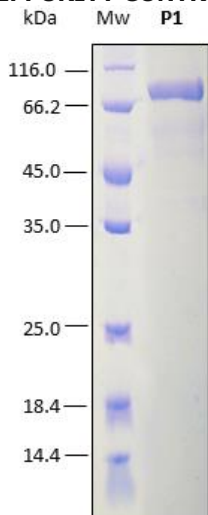


Figure 1. SDS-PAGE analysis (15%) of 3 µl of recombinant P1 adhesin. Purity is > 95% as determined by gel electrophoresis.

3. ABSENCE OF PRECIPITATION AFTER A FREEZING AND THAWING CYCLE: ok

LOT SPECIFICATIONS:

- 1. CONCENTRATION:** 1.19 mg/ml
- 2. TOTAL QUANTITY PER ALIQUOT:** 1 mg
- 3. TOTAL VOLUME PER ALIQUOT:** 0.84 ml
- 4. STORAGE:** Protein is shipped with dry ice. Upon arrival, it should be aliquoted to avoid repeated freezing and thawing cycles and stored at -20°C to -80°C. Upon defrosting, leave the solution at least 15 min homogenizing with a mild agitation at 4°C.
- 5. APPLICATIONS:** not tested. Where this product has not been tested for use in a particular technique, this does not necessarily exclude its use in such procedures. Suggested working dilutions are given as a guide only. It is recommended that the user titrates.
- 6. OBSERVATIONS:** Proteins should be maintained frozen at high concentrations. The dilution to be performed for ELISA assays should be made with a small quantity of protein, the same day of the experiment. In order to defrost the protein, maintain the aliquot at 25°C without shaking to avoid aggregation. Prior making test dilutions and after defrosting the protein, is recommended to remove possible protein aggregates by centrifuging the stock solution, avoiding alterations in the immobilization of the biomolecule to the solid surface.

RELATED PRODUCTS:

None.

BIBLIOGRAPHY:

Chaudhry, R., Nisar, N., Hora, B., Chirasani, S.R., and P. Malhotra. Expression and Immunological Characterization of the Carboxy-Terminal Region of the P1 Adhesin Protein of *Mycoplasma pneumoniae*. 2005. Journal of Clinical Microbiology, Vol. 3 N° 1, p. 321-325.

Gill SC, von Hippel PH. Calculation of protein extinction coefficients from amino acid sequence data. *Anal Biochem.* 1989 Nov 1;182(2):319-26.

Important Notes: During shipment, small volumes of product will occasionally become entrapped in the seal of the product vial. For products with volumes of 200 μ l or less, we recommend gently tapping the vial on a hard surface or briefly centrifuging the vial in a tabletop centrifuge to dislodge any liquid in the containers cap.

Although recombinant antigens are expressed in non-pathogenic *E. coli* and bacterial integrity is destroyed during purification, the antigen preparation should be handled as potentially infectious.

FOR RESEARCH AND COMMERCIAL USE *IN VITRO*: not for human *in vivo* or therapeutic use.