

Recombinant allergen Bet v 1 for *Betula verrucosa* (European white birch)

CATALOG NUMBER: RAL0011

LOT NUMBER: #

RECOMBINANT ALLERGEN: *Betula verrucosa* Bet v 1 is the major allergen of birch pollen (Ipsen and Løwenstein, 1983).

DESCRIPTION: the *Betula verrucosa* pathogenesis-related protein Bet v 1 has been prepared as the recombinant mature protein fused to a his-tag.

PRESENTATION: liquid protein solution

SOURCE: *Escherichia coli*

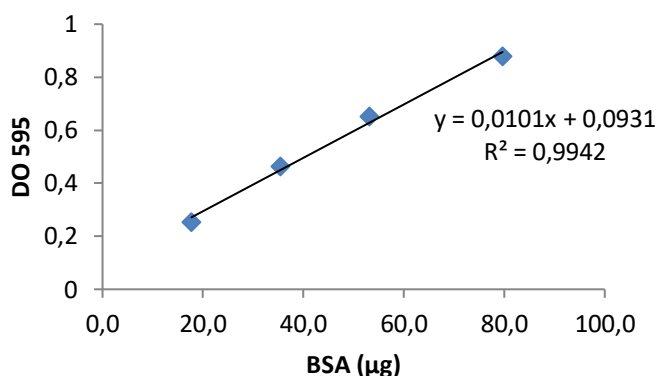
MOLECULAR WEIGHT: determined by SDS-PAGE, the protein band is between molecular markers of 35,000 and 25,000 Da, while relative molecular mass calculated from amino acid sequence is 24,262.07 Da.

BATCH COMPOSITION:

| COMPONENTS | COMPOSITION |
|----------------|---|
| his-Bet v 1 | recombinant allergen with a his-tag |
| Storage buffer | 20 mM phosphate buffer pH 8 and 0.1 M KCl |

QUALITY CONTROL:

1. PROTEIN CONCENTRATION DETERMINED ESPECTROPHOTOMETRICALLY



This protein does not contain any Trp residues. Experience shows that this could result in more than 10% error in the computed extinction coefficient. Therefore, we have measured the protein concentration by using the colorimetric assay based on the interaction between Coomassie brilliant blue and the arginine and aromatic residues (Bradford Method) and its maximum absorption shifts from 470 nm to 595 nm. The standard curve was performed with the protein BSA. 40 µl of the protein were analysed.

DO₅₉₅ = 0.651
CONCENTRATION = 1.38 mg/ml

2. PURITY CONTROL IN SDS-PAGE: 15%

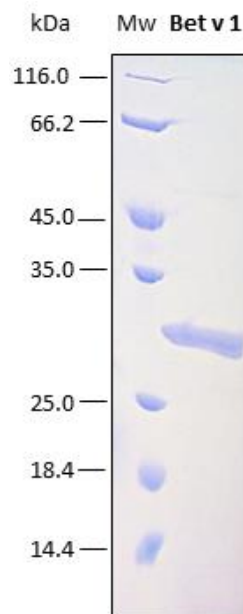


Figure 1. SDS-PAGE analysis (15%) of 2 µl of recombinant allergen. Purity is >95% as determined by gel electrophoresis.

3. ABSENCE OF PRECIPITATION AFTER A FREEZING AND THAWING CYCLE: ok

LOT SPECIFICATIONS:

- 1. CONCENTRATION:** 1.38 mg/ml
- 2. TOTAL QUANTITY PER ALIQUOT:** 1 mg
- 3. TOTAL VOLUME PER ALIQUOT:** 0.76 ml
- 4. STORAGE:** Protein is shipped with dry ice. Upon arrival, it should be aliquoted to avoid repeated freezing and thawing cycles and stored at -20°C to -80°C. In order to defrost the protein, maintain the aliquot at 25°C without shaking to avoid aggregation.
- 5. TESTED APPLICATIONS:** none.
- 6. POSSIBLE APPLICATIONS:** WB, DB, Indirect ELISA, positive control in direct ELISA, CLIA, lateral-flow. Where this product has not been tested for use in a particular technique, this does not necessarily exclude its use in such procedures. Suggested working dilutions are given as a guide only. It is recommended that the user titrates.
- 7. OBSERVATIONS:** proteins should be maintained frozen at high concentrations. In order to defrost the protein, maintain the aliquot at 25°C without shaking to avoid aggregation. Prior making test dilutions and after defrosting the protein, is recommended to remove possible protein aggregates by centrifuging the stock solution, avoiding alterations in the immobilization of the biomolecule to the solid surface.

RELATED PRODUCTS:

Bet v 4.

BIBLIOGRAPHY:

Ipsen H, Løwenstein H. Isolation and immunochemical characterization of the major allergen of birch pollen (*Betula verrucosa*). 1983. *J Allergy Clin Immunol.* 72:150-9.

Bradford, MM. A rapid and sensitive method for the quantitation of microgram quantities of protein utilizing the principle of protein dye binding. *Anal Biochem.* 1976, 131:499-503.

Important Notes: During shipment, small volumes of product will occasionally become entrapped in the seal of the product vial. For products with volumes of 200 µl or less, we recommend gently tapping the vial on a hard surface or briefly centrifuging the vial in a tabletop centrifuge to dislodge any liquid in the containers cap.

Although recombinant antigens are expressed in non-pathogenic *E. coli* and bacterial integrity is destroyed during purification, the antigen preparation should be handled as potentially infectious.

FOR RESEARCH AND COMMERCIAL USE IN VITRO: not for human in vivo or therapeutic use

Recombinant allergen Bet v 1 for *Betula verrucosa* (European white birch)

Rekom Biotech S.L. – BIC-Granada, Avda. Innovación, 1 – 18016, Granada (Spain) Tel: +34 958 63 70 85
E-mail: info@rekombiotech.com – Web: www.rekombiotech.com – An ISO 9001 and 13485 Certified Company

Page 2 of 2