

CATALOG NUMBER: PAB0002

LOT NUMBER: #

IMMUNOGEN: CMV recombinant antigen pp150 (Rekom Biotech catalog reference RAG0091)

SPECIFICITY: Monospecific, reacts only with CMV epitopes. Non-reactive with normal human serum.

PREPARATION: Isolated from sera of rabbits immunized with highly pure (>98%) recombinant pp150. Anti-CMV pp150 specific antibody was purified by protein G affinity chromatography.

PURITY: >95% (SDS-PAGE)

PRESENTATION: liquid protein solution

SOURCE: rabbit

BATCH COMPOSITION:

COMPONENTS	COMPOSITION
Storage buffer	20 mM phosphate buffer pH 7, 0.15 M NaCl and 0.1% sodium azide

LOT SPECIFICATIONS:

- 1. CONCENTRATION:** 1.86 mg/ml
- 2. TOTAL QUANTITY PER ALIQUOT:** 1 mg
- 3. TOTAL VOLUME PER ALIQUOT:** 0.54 ml
- 4. STORAGE:** Antibody is shipped with dry ice. Upon arrival, it should be aliquoted to avoid repeated freezing and thawing cycles and stored at -20°C to -80°C. In order to defrost the antibody, maintain the aliquot at 25°C without shaking to avoid aggregation.
- 5. WESTERN BLOT:** suggested titer approx. 1:3,000

kDa Mw Ext^o CMV

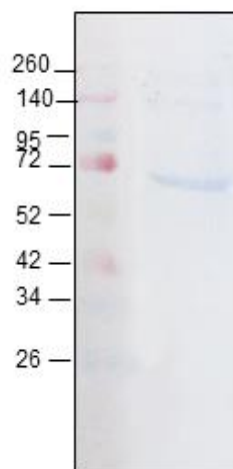


Figure 1. Western blot analysis of the polyclonal Ab to detect the native pp150 in a clarified cell lysate containing a mix of CMV antigens from all stages of the replication life cycle*. Pp150 polyclonal Ab was used in a 1:3,000 dilution over 3 µg of clarified extract.

6. ELISA ANALYSIS:

Antibody titration assay. A titration assay of the antibody was performed with a fixed recombinant immunogen concentration.

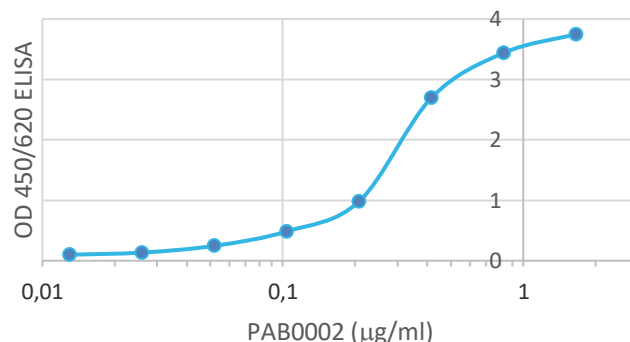


Figure 2. Titration of the polyclonal Ab diluted from 1/800 in a twofold series against constant antigen (0.25 µg/ml, 15.6 nM). Mean values of OD are used.

The suggested titer for Ab PAB0002 is between 1/18,000 (0.10 µg/ml) and 1/36,000 (0.05 µg/ml).

Suggested working dilutions are given as a guide only. It is recommended that the user titrates.

7. OTHER TECHNIQUES: not tested. Where this product has not been tested for use in a particular technique, this does not necessarily exclude its use in such procedures.

Important Notes: Where this product has not been tested for use in a technique, this does not necessarily exclude its use in such procedures. Suggested working dilutions are given as a guide only. It is recommended that the user titrates.

During shipment, small volumes of product will occasionally become entrapped in the seal of the product vial. For products with volumes of 200 µl or less, we recommend gently tapping the vial on a hard surface or briefly centrifuging the vial in a tabletop centrifuge to dislodge any liquid in the containers cap.

FOR RESEARCH AND COMMERCIAL USE *IN VITRO*: not for human *in vivo* or therapeutic use

IgG polyclonal antibody against pp150 for Cytomegalovirus

Rekom Biotech S.L. – BIC-Granada, Avda. Innovación, 1 – 18016, Granada (Spain) – Tel: +34 958 63 70 85
E-mail: info@rekombiotech.com – Web: www.rekombiotech.com – An ISO 9001 and 13485 Certified Company

Page 2 of 2