

Recombinant multi-epitope chimeric antigen ChimCMV3 for Cytomegalovirus (CMV)

CATALOG NUMBER: RAG0018

LOT NUMBER: #

RECOMBINANT ANTIGEN: recombinant multi-epitope chimeric antigen for CMV.

DESCRIPTION: the recombinant multi-epitope chimeric antigen of CMV has been prepared as a chimeric protein formed by several antigenic determinants from some proteins of this virus.

PRESENTATION: liquid protein solution

SOURCE: *Escherichia coli*

SPECIFIC ANTIBODY (CALIBRATOR): CMV pp52 and pp150 polyclonal antibodies (Rekom Biotech catalog references PAB0001 and PAB0002)

MOLECULAR WEIGHT: determined by SDS-PAGE, the protein band is between the molecular markers of 45,000 and 35,000 Da, while relative molecular mass calculated from amino acid sequence is 25,929.93 Da.

BATCH COMPOSITION:

COMPONENTS	COMPOSITION
his-ChimCMV3	Recombinant chimeric antigen with a his-tag in its N-terminus
Storage buffer	20 mM phosphate buffer pH 7, 0.15 M NaCl and 0,1% polyoxyethylene (10) tridecylether

QUALITY CONTROL:

1. PROTEIN CONCENTRATION DETERMINED ESPECTROPHOTOMETRICALLY

DO₂₈₀ = 1.11
 A_{0.1%} (=1 g/l) = 0.447
 CONCENTRATION*: 2.49 mg/ml

* The measurement of the protein concentration has been performed with the theoretical extinction coefficient of the recombinant protein obtained from Gill and vonHippel, 1989. It is recommended that the users carry out their absorbance determinations to avoid equipment variabilities regarding final concentration, mainly in reproducibility analysis.

2. PURITY CONTROL IN SDS-PAGE: 15%

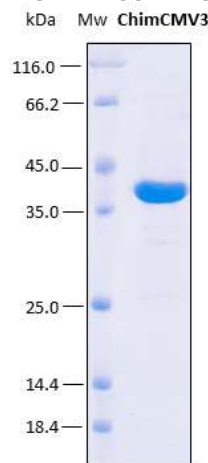


Figure 1. SDS-PAGE analysis (15%) of 2 µl of recombinant ChimCMV3. Purity is > 95% as determined by gel electrophoresis.

3. DISCRIMINATION OF PRE-VALIDATED SERA BY AN INDIRECT ELISA ASSAY

The cut-off has been suggested about an "in-house" ELISA kit performed in Rekom Biotech.

Each end-user should carry out an analysis for their particular application.

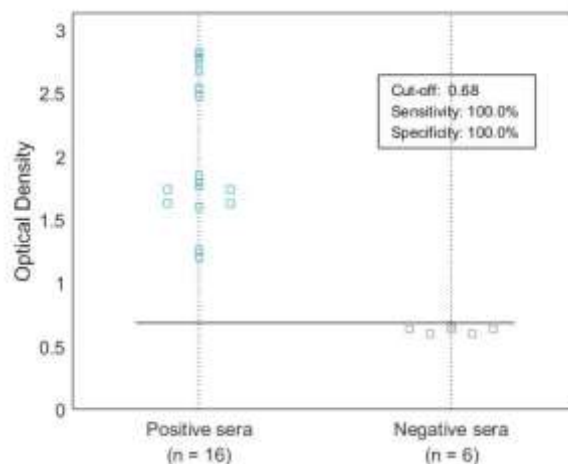


Figure 2. The dot plot graph illustrates the distribution of positive and negative sera by an indirect IgM ELISA with a ChimCMV3 plate coating of 1 µg/ml. Pre-validated sera by IgM CMV (VIDAS) were used in this analysis. The chart shows the optical density at 450/620 nm for positive (blue) and negative (grey) IgM sera.

4. ABSENCE OF PRECIPITATION AFTER A FREEZING AND THAWING CYCLE: ok

LOT SPECIFICATIONS:

- 1. CONCENTRATION:** 2.49 mg/ml
- 2. TOTAL QUANTITY PER ALIQUOT:** 1 mg

3. TOTAL VOLUME PER ALIQUOT: 0.422 ml

3. SUGGESTED TITER BY ELISA: 1:2,490, which corresponds to 1 µg/ml of protein concentration in plates for IgM detection.

5. STORAGE: Protein is shipped with dry ice. Upon arrival, it should be aliquoted to avoid repeated freezing and thawing cycles and stored at -20°C to -80°C. In order to defrost the protein, maintain the aliquot at 25°C without shaking to avoid aggregation.

5. TESTED APPLICATIONS: ELISA.

6. POSSIBLE APPLICATIONS: WB, DB, Indirect ELISA, positive control in direct ELISA, CLIA, lateral-flow. Where this product has not been tested for use in a particular technique, this does not necessarily exclude its use in such procedures. Suggested working dilutions are given as a guide only. It is recommended that the user titrates.

7. OBSERVATIONS: proteins should be maintained frozen at high concentrations. The dilution to be performed for ELISA assays should be made with a small quantity of protein, the same day of the experiment. In order to defrost the protein, maintain the aliquot at 25°C without shaking to avoid aggregation. Prior making test dilutions and after defrosting the protein, is recommended to remove possible protein aggregates by centrifuging the stock solution, avoiding alterations in the immobilization of the biomolecule to the solid surface.

RELATED PRODUCTS:

pp150, pp52, pp52-Biot, pp65, ChimCMV1, ChimCMV1-Biot, ChimCMV2, ChimCMV2-Biot, pp28.

BIBLIOGRAPHY:

Maine, G.T., R. Stricker, M. Schuler, J. Spesard, S. Brojanac, B. Iriarte, K. Herwig, T. Gramins, B. Combs, J. Wise, H. Simmons, T. Gram, J. Lonze, D. Ruzicki, B. Byrne, J. D. Clifton, L. E. Chovan, D. Wachta, C. Holas, D. Wang, T. Wilson, S. Tomazic-Allen, M. A. Clements, G. L. Wright, Jr., T. Lazzarotto, A. Ripalti, and M. P. Landini. Development and Clinical Evaluation of a Recombinant-Antigen-Based Cytomegalovirus Immunoglobulin M Automated Immunoassay Using the Abbott AxSYM Analyzer. 2000, *J Clin Microbiol.*, 38(4):1476-1481.

Gill SC, von Hippel PH. Calculation of protein extinction coefficients from amino acid sequence data. *Anal Biochem.* 1989 Nov 1;182(2):319-26.

Important Notes: During shipment, small volumes of product will occasionally become entrapped in the seal of the product vial. For products with volumes of 200 µl or less, we recommend gently tapping the vial on a hard surface or briefly centrifuging the vial in a tabletop centrifuge to dislodge any liquid in the containers cap.

Although recombinant antigens are expressed in non-pathogenic *E. coli* and bacterial integrity is destroyed during purification, the antigen preparation should be handled as potentially infectious.

FOR RESEARCH AND COMMERCIAL USE *IN VITRO*: not for human *in vivo* or therapeutic use.