

Recombinant multi-epitope chimeric antigen ChimLip1 for *Leptospira interrogans*

CATALOG NUMBER: RAG0019

LOT NUMBER: #

RECOMBINANT ANTIGEN: *Leptospira interrogans* ChimLip1

DESCRIPTION: the recombinant multi-epitope chimeric antigen of *L. interrogans* contains several antigenic determinants from some proteins of this spirochete fused to a his-tag in its C-terminus.

PRESENTATION: liquid protein solution

SOURCE: *Escherichia coli*

MOLECULAR WEIGHT: SDS-PAGE analysis determines that the protein band is between the molecular markers of 45,000 Da and 66,200 Da, while relative molecular mass, calculated from amino acid sequence is 50,498.64 Da.

BATCH COMPOSITION:

COMPONENTS	COMPOSITION
his-ChimLip1	recombinant antigen with a his-tag in its C-terminus
Storage buffer	20 mM phosphate buffer pH 7 0.15 M NaCl and 0.1% polyoxyethylene (10) tridecyl ether

QUALITY CONTROL:

1. PROTEIN CONCENTRATION DETERMINED ESPECTROPHOTOMETRICALLY

DO₂₈₀ = 1.60
 A_{0.1%} (=1 g/l) = 1.239
 CONCENTRATION*: 1.29 mg/ml

* The measurement of the protein concentration has been performed with the theoretical extinction coefficient of the recombinant protein obtained from Gill and vonHippel, 1989. It is recommended that the users carry out their absorbance determinations to avoid equipment variabilities regarding final concentration, mainly in reproducibility analysis.

2. PURITY CONTROL IN SDS-PAGE: 15%

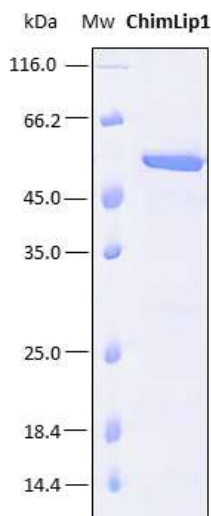


Figure 1. SDS-PAGE analysis (15%) of 4 µl of recombinant ChimLip1. Purity is >95% as determined by gel electrophoresis.

3. ABSENCE OF PRECIPITATION AFTER A FREEZING AND THAWING CYCLE: ok

LOT SPECIFICATIONS:

- 1. CONCENTRATION:** 1.29 mg/ml
- 2. TOTAL QUANTITY PER ALIQUOT:** 1 mg
- 3. TOTAL VOLUME PER ALIQUOT:** 0.814 ml
- 4. STORAGE:** Protein is shipped with dry ice. Upon arrival, it should be aliquoted to avoid repeated freezing and thawing cycles and stored at -20°C to -80°C. In order to defrost the protein, maintain the aliquot at 25°C without shaking to avoid aggregation.
- 5. TESTED APPLICATIONS:** none.
- 6. POSSIBLE APPLICATIONS:** WB, DB, Indirect ELISA, positive control in direct ELISA, CLIA, lateral-flow. Where this product has not been tested for use in a particular technique, this does not necessarily exclude its use in such procedures. Suggested working dilutions are given as a guide only. It is recommended that the user titrates.

7. OBSERVATIONS: In some cases, purified proteins run at a molecular weight which is slightly different to the theoretically calculated molecular weight maybe due to the his-tag presence, which can produce a delay in SDS-PAGE. Proteins should be maintained frozen at high concentrations. The dilution to be performed for ELISA assays should be made with a small quantity of protein, the same day of the experiment. In order to defrost the protein, maintain the aliquot at 25°C without shaking to avoid aggregation. Prior making test dilutions and after defrosting the protein, is recommended to remove possible protein aggregates by centrifuging the stock solution, avoiding alterations in the immobilization of the biomolecule to the solid surface.

RELATED PRODUCTS:

LipL32, LipL21, ChimLip1 (RAG0037).

BIBLIOGRAPHY:

Gill SC, von Hippel PH. Calculation of protein extinction coefficients from amino acid sequence data. *Anal Biochem.* 1989 Nov 1;182(2):319-26.

Important Notes: During shipment, small volumes of product will occasionally become entrapped in the seal of the product vial. For products with volumes of 200 µl or less, we recommend gently tapping the vial on a hard surface or briefly centrifuging the vial in a tabletop centrifuge to dislodge any liquid in the containers cap.

Although recombinant antigens are expressed in non-pathogenic *P. pastoris* and bacterial integrity is destroyed during purification, the antigen preparation should be handled as potentially infectious.

FOR RESEARCH AND COMMERCIAL USE *IN VITRO*: not for human *in vivo* or therapeutic use.