

Recombinant multi-epitope chimeric antigen ChimMp1 for *Mycoplasma pneumoniae*

CATALOG NUMBER: RAG0051

LOT NUMBER: #

RECOMBINANT ANTIGEN: *Mycoplasma pneumoniae* recombinant multi-epitope chimeric antigen 1 (Layh-Schmitt *et al.*, 1997; Chaudhry *et al.*, 2005).

DESCRIPTION: this recombinant chimeric protein contains several antigenic determinants of P30 and P1 adhesin proteins. It has been expressed as a recombinant antigen fused to a his-tag in its N-terminus.

PRESENTATION: liquid protein solution

SOURCE: *Escherichia coli*

SPECIFIC ANTIBODY (CALIBRATOR): Polyclonal antibody for *Mycoplasma pneumoniae* (Rekom Biotech catalog reference PAB0011).

MOLECULAR WEIGHT: determined by SDS-PAGE, the protein band appears between the molecular markers of 66,200 and 45,000 Da, while relative molecular mass calculated from amino acid sequence is 66,501.69 Da.

BATCH COMPOSITION:

COMPONENTS	COMPOSITION
His-multi-epitope adhesins	recombinant antigen with a his-tag in its N-terminus
Storage buffer	20 mM phosphate buffer pH 7, 0.15 M NaCl, 0.13 M trehalose and 0.1% polyoxyethylene (10) tridecyl ether

QUALITY CONTROL:

1. PROTEIN CONCENTRATION DETERMINED ESPECTROPHOTOMETRICALLY

DO₂₈₀ = 0.70
 A_{0.1%} (=1 g/l) = 0.675
 CONCENTRATION*: 1.04 mg/ml

* The measurement of the protein concentration has been performed with the theoretical extinction coefficient of the recombinant protein obtained from Gill and vonHippel, 1989. It is recommended that the users carry out their absorbance determinations to avoid equipment variabilities regarding final concentration, mainly in reproducibility analysis.

2. PURITY CONTROL IN SDS-PAGE: 15%

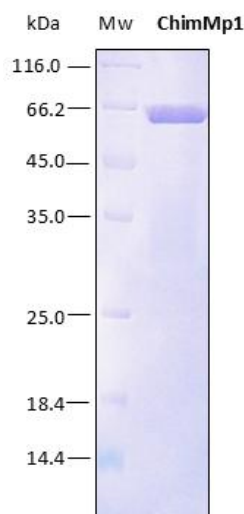


Figure 1. SDS-PAGE analysis (15%) of 5 µl of recombinant multi-epitope chimeric antigen. Purity is > 95% as determined by gel electrophoresis.

3. ABSENCE OF PRECIPITATION AFTER A FREEZING AND THAWING CYCLE: ok

LOT SPECIFICATIONS:

- 1. CONCENTRATION:** 1.04 mg/ml
- 2. TOTAL QUANTITY PER ALIQUOT:** 1 mg
- 3. TOTAL VOLUME PER ALIQUOT:** 0.962 ml
- 4. STORAGE:** Protein is shipped with dry ice. Upon arrival, it should be aliquoted to avoid repeated freezing and thawing cycles and stored at -20°C to -80°C. In order to defrost the protein, maintain the aliquot at 25°C without shaking to avoid aggregation
- 5. TESTED APPLICATIONS:** none.
- 6. POSSIBLE APPLICATIONS:** WB, DB, Indirect ELISA, positive control in direct ELISA, CLIA, lateral-flow. Where this product has not been tested for use in a particular technique, this does not necessarily exclude its use in such procedures. Suggested working dilutions are given as a guide only. It is recommended that the user titrates.

7. OBSERVATIONS: In some cases, purified proteins run at a molecular weight which is slightly different to the theoretically calculated molecular weight maybe due to the his-tag presence, which can produce a delay in SDS-PAGE. Proteins should be maintained frozen at high concentrations. The dilution to be performed for ELISA assays should be made with a small quantity of protein, the same day of the experiment. In order to defrost the protein, maintain the aliquot at 25°C without shaking to avoid aggregation. Prior making test dilutions and after defrosting the protein, is recommended to remove possible protein aggregates by centrifuging the stock solution, avoiding alterations in the immobilization of the biomolecule to the solid surface.

RELATED PRODUCTS:

P1, P30, ChimMp2, P116.

BIBLIOGRAPHY:

Layh-Schmitt, G., Himmelreich, R. and U. Leibfried. The adhesin related 30-kDa protein of *Mycoplasma pneumoniae* exhibit size and antigen variability. 1997. FEMS Microbiology Letters, 152: 101-108.

Chaudhry, R., Nisar, N., Hora, B., Chirasani, S.R., and P. Malhotra. Expression and Immunological Characterization of the Carboxy-Terminal Region of the P1 Adhesin Protein of *Mycoplasma pneumoniae*. 2005. Journal of Clinical Microbiology, Vol. 3 N° 1, p. 321-325.

Gill SC, von Hippel PH. Calculation of protein extinction coefficients from amino acid sequence data. *Anal Biochem.* 1989 Nov 1;182(2):319-26.

Important Notes: During shipment, small volumes of product will occasionally become entrapped in the seal of the product vial. For products with volumes of 200 µl or less, we recommend gently tapping the vial on a hard surface or briefly centrifuging the vial in a tabletop centrifuge to dislodge any liquid in the containers cap.

Although recombinant antigens are expressed in non-pathogenic *E. coli* and bacterial integrity is destroyed during purification, the antigen preparation should be handled as potentially infectious.

FOR RESEARCH AND COMMERCIAL USE *IN VITRO*: not for human *in vivo* or therapeutic use.